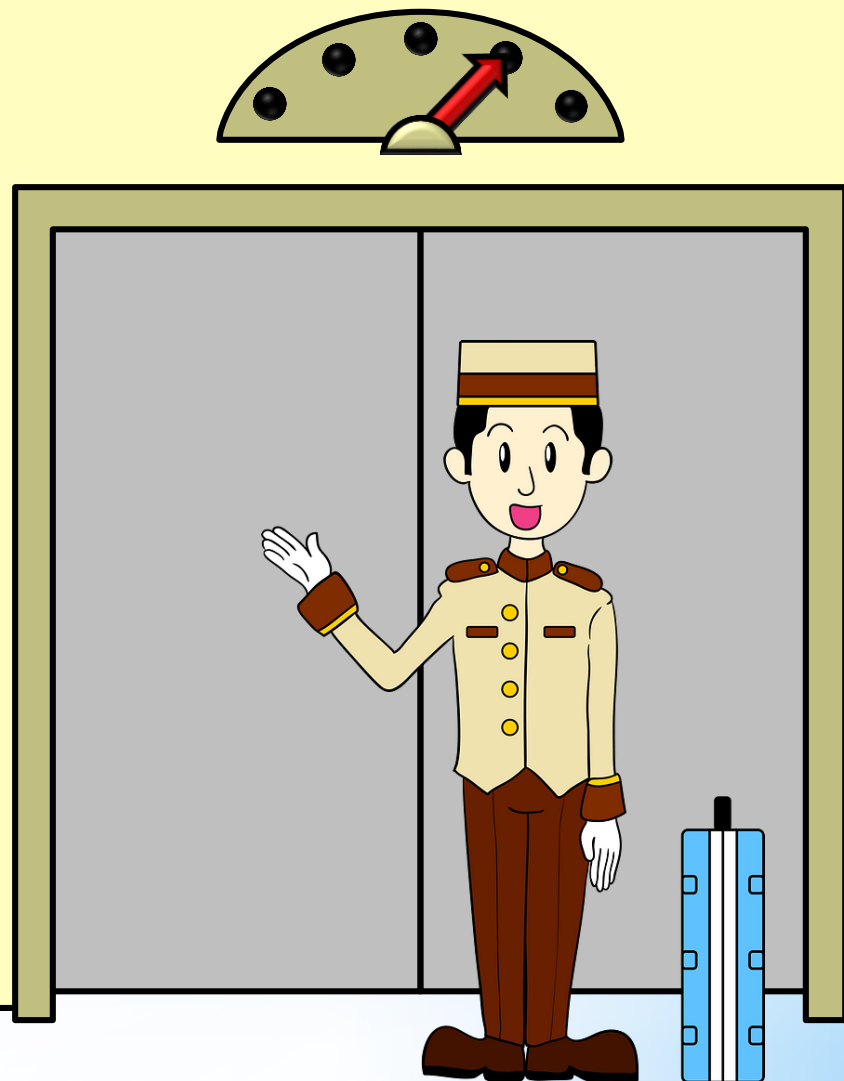
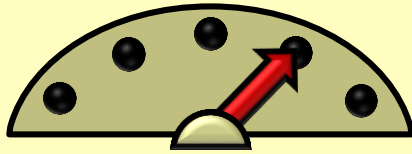


# WHAT ANIMAL IS IN THE LIFT?

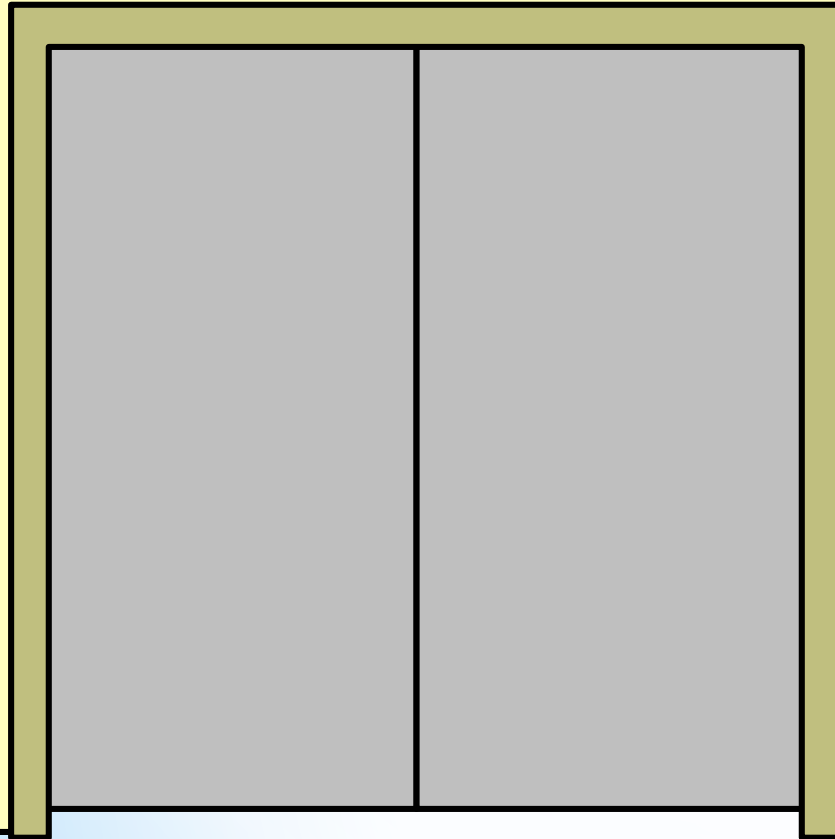
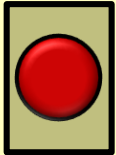
Какое животное в лифте?

START

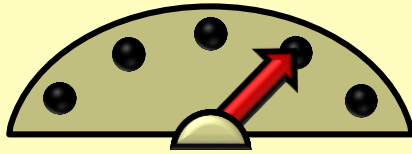




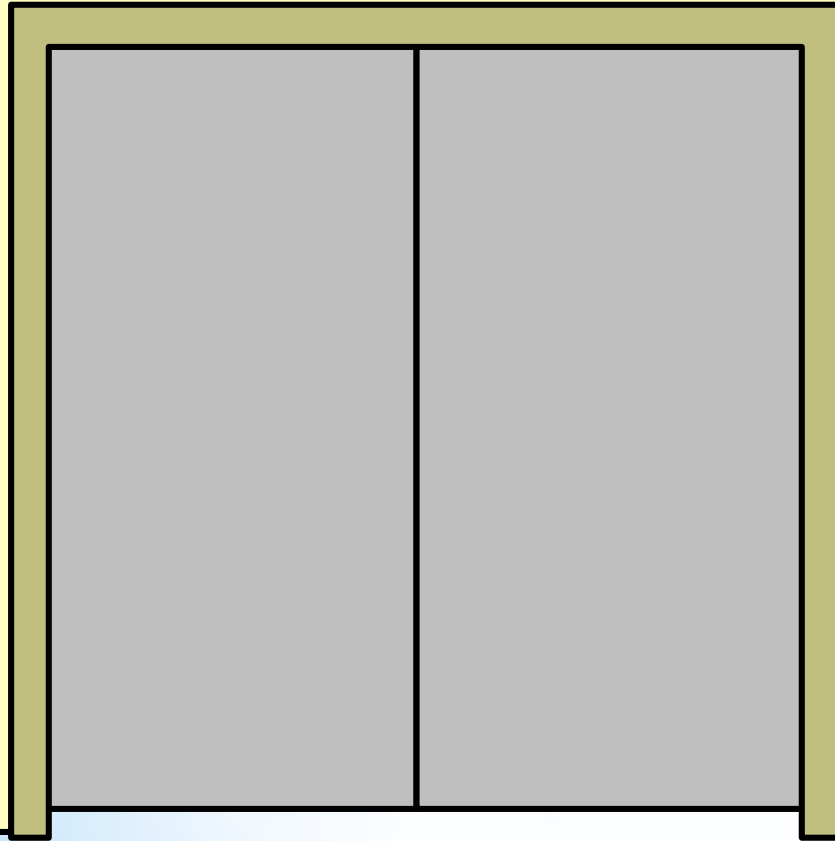
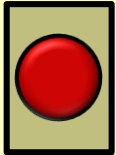
check



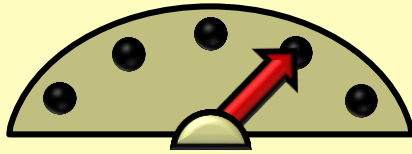
It is orange  
and black. It  
has got 4 legs.  
It lives in the  
jungle.



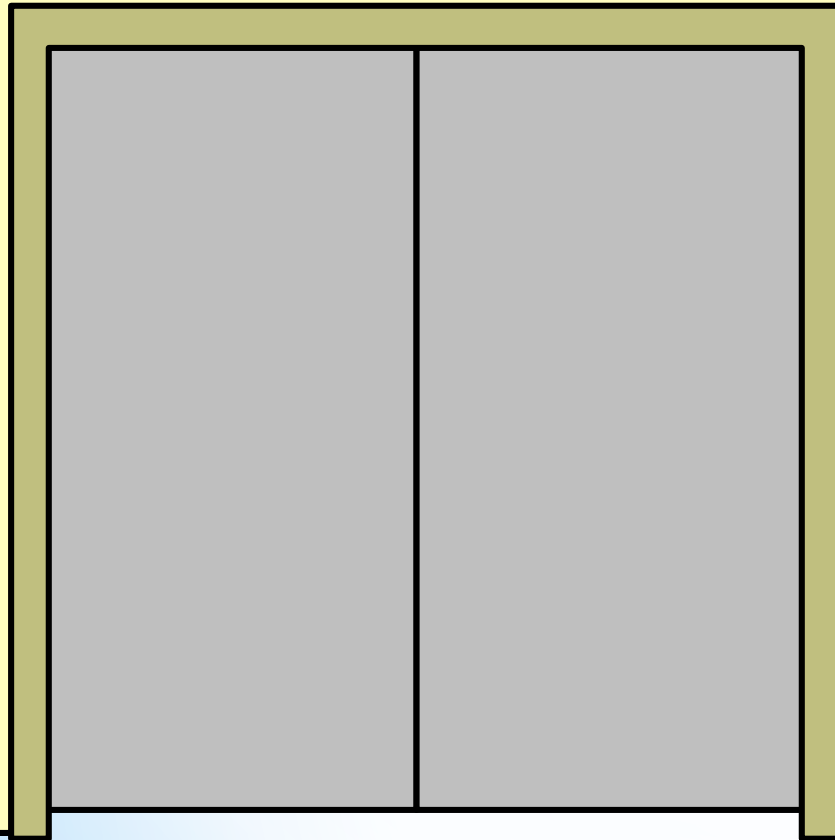
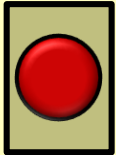
check



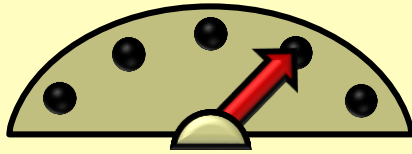
It likes  
bananas and  
fruit. It can  
jump and  
climb trees.



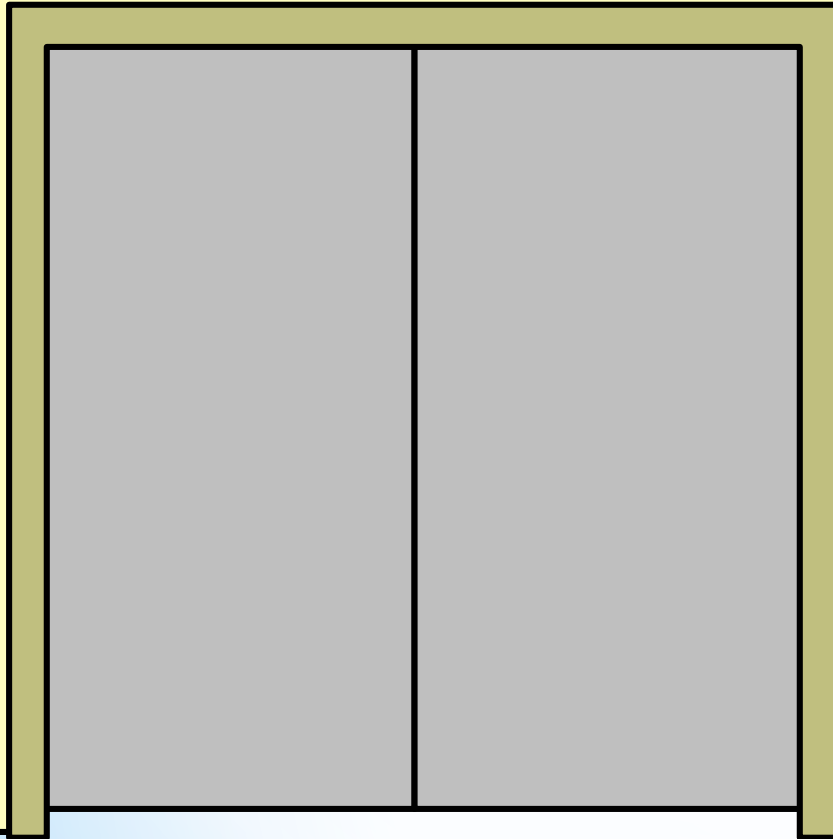
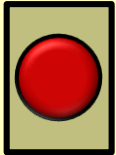
check



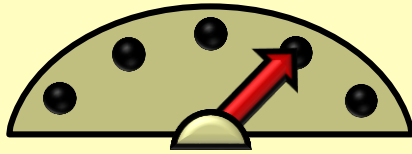
It is long. It  
hasn't got legs  
or hands. It  
has got a red  
tongue.



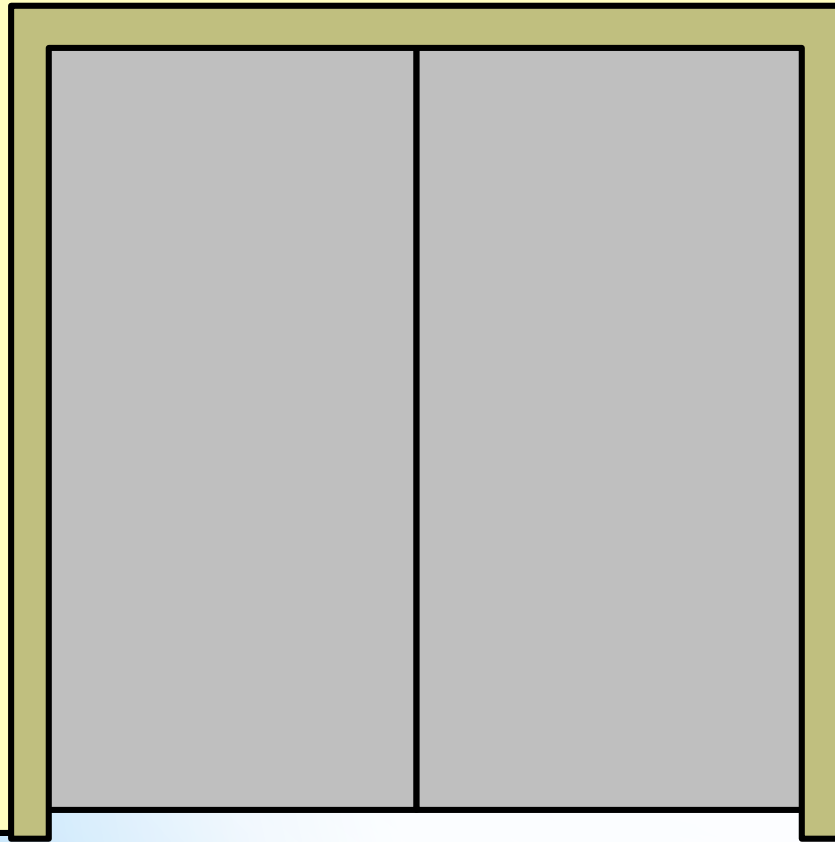
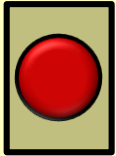
check



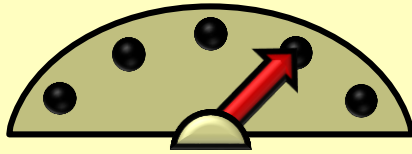
It can fly. It  
can sing. It  
likes eating  
fruit. It lives  
in Africa.



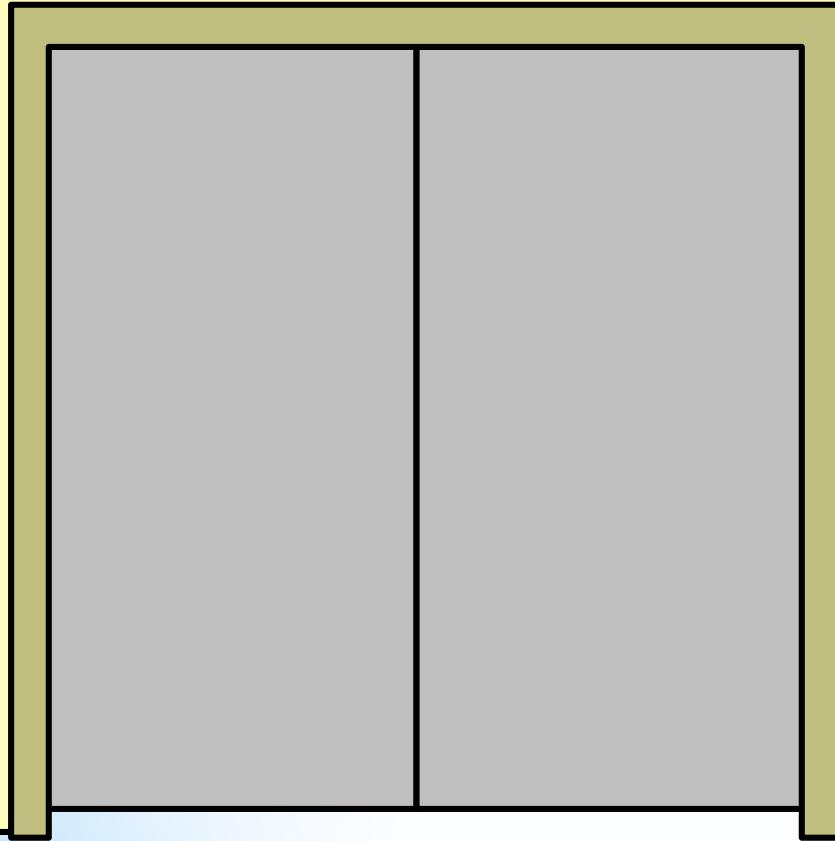
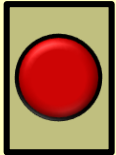
check



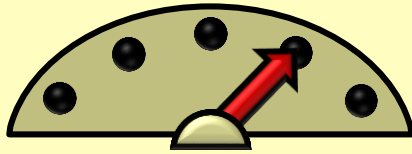
It can't jump.  
It is grey. It  
has got big  
ears and a  
long trunk.



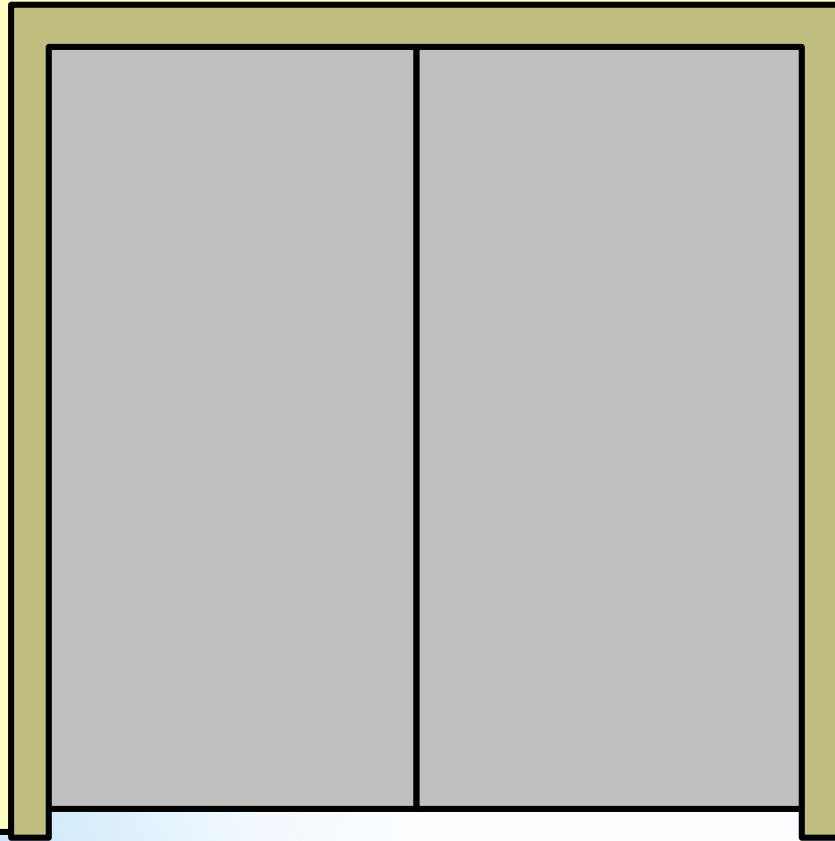
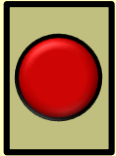
check



It can run fast.  
It is black and  
white. It looks  
like a horse.

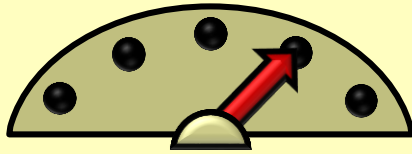


check

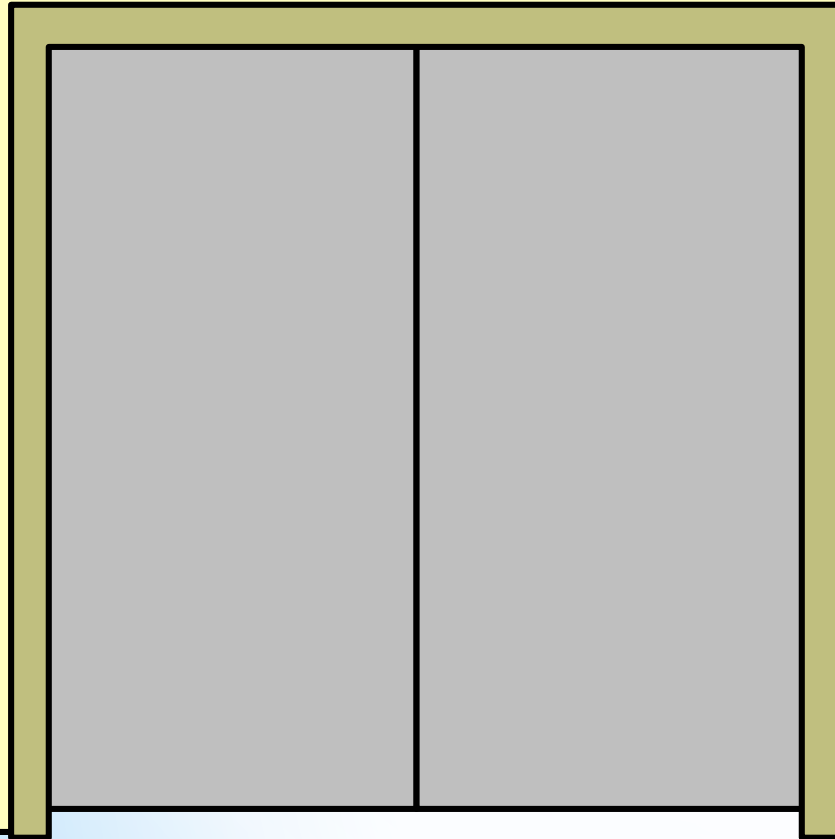
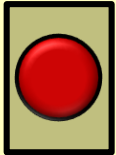


It can jump. It  
is green. It  
likes eating  
mosquitoes.





check



It is green. It  
can swim. It  
has got white  
teeth. It lives  
in Africa.

*Well done!*  
*Отлично!*

